



Schoolwide Expectations

Respectful: Follow directions of teachers and staff.

Responsible: Look and listen when someone is talking to you.

Ready: Bring needed materials and be on time.

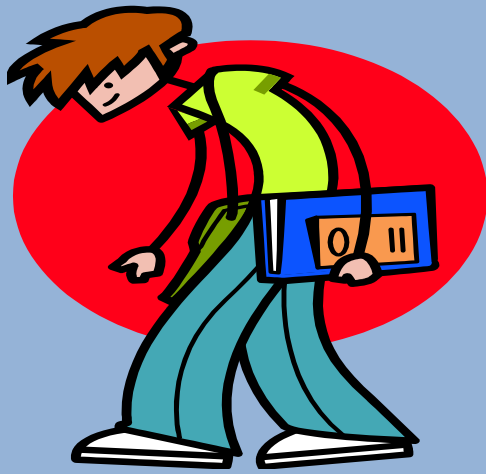


Bathroom Expectations

Respectful: Use good manners and allow privacy.

Responsible: Practice good hygiene and leave areas clean.

Ready: Use time wisely and use available space.



Hall Expectations

Respectful: No voices.

Responsible: Right, Tight, and Stop at light.

Ready: Hands together and use walking position.



Classroom Expectations

Respectful: Listen and cooperate with others.

Responsible: Follow classroom procedures and directions.

Ready: Be prepared and willing to learn.



Recess Expectations

Respectful: Take turns and include others.

Responsible: Use equipment and play areas safely.
Return equipment to designated areas.

Ready: Line up at the teacher's signal and follow directions.

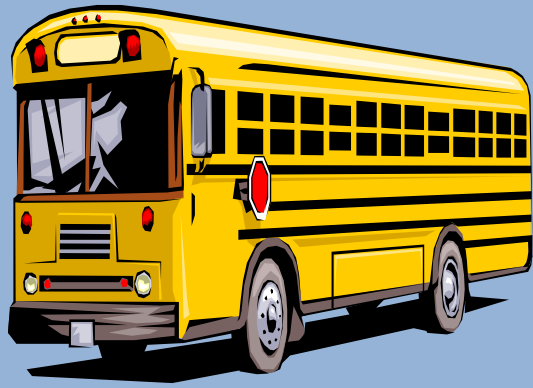


Cafeteria Expectations

Respectful: Use a quiet voice. No talking for the first 10 minutes of cafeteria time.

Responsible: Get all your items when you go through the line. Use your best table manners.

Ready: Push your chairs under the table and pick up any trash around you.



Bus Expectations

Respectful: Keep your hands and feet to yourself.

Responsible: Use a quiet voice. Sit in your seat with your back against it.

Ready: Leave all items in your book bag.